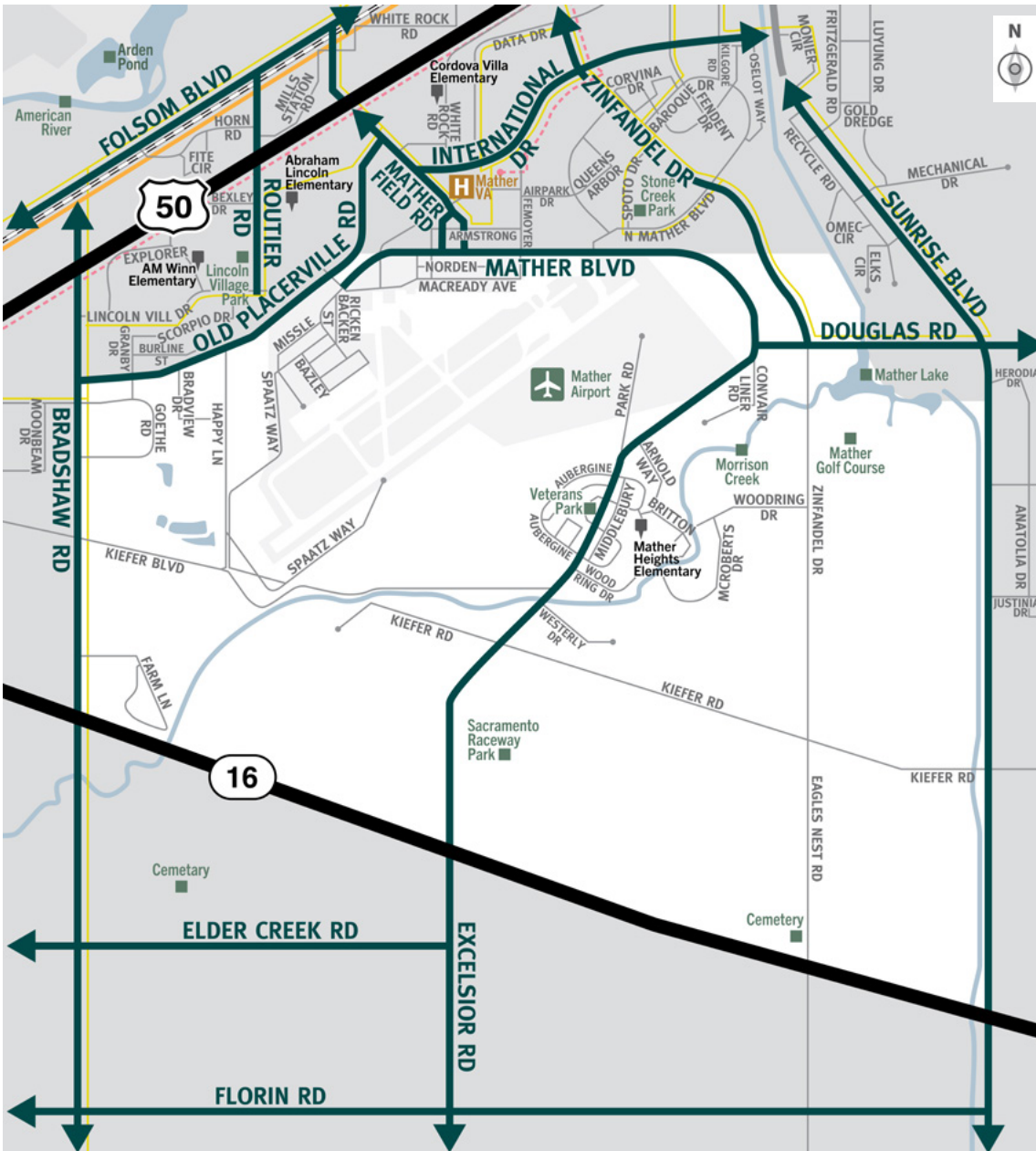


# 72 Mather Field Know your way out.



Scan this QR code to download your neighborhood map on your phone or tablet!



Familiarize yourself with major routes out of your neighborhood in case of an evacuation.

### Map Legend

Exterior Zone	Hospital	Light Rail Blue Line Meadowview-Watt / I-80
Interior Zone Boundary	Train	Local Bus Route
Landmarks	Evacuation Routes	Bus Route Peak-only Commute-Hour Service
	Airport	

## Emergency alerts & fire information

**Wildfires can strike suddenly and without warning.** Public safety officials will attempt to notify residents when evacuation is necessary, but this is not always possible. Advance preparation and situational awareness are required.

### Evacuation Warning

An **Evacuation Warning** means that there is a danger to life and property. People should use this warning to get ready to evacuate. Those who need additional time should leave when the warning is given, rather than wait for an Evacuation Order.

### Evacuation Order

An **Evacuation Order** means you must evacuate **now**. Staying could result in loss of life and/or slow the work of responders. An Evacuation order may be the only warning that you receive.

# Quick Evacuation

## Family Wildfire and Flood Evacuation Checklist



### Grab Quickly

#### Go-Bag Contents

- Flashlight/Headlamp
- Local map
- Water and snacks
- Important documents
- Emergency blanket
- Cash
- Portable radio and batteries
- Sturdy shoes and socks
- Whistle
- Clothing and jackets
- Toiletries and towels
- Camping equipment

#### Last Minute Grab

- Prescriptions, medical devices, cell phone, computers, electronics and chargers
- Family heirlooms, art, photo albums
- Pets, carriers, vaccination records and pet food



### As You Leave

#### Wildfire

- Shut all** interior doors
- Raise** all shades
- Turn on** inside lights
- Turn on** outside lights
- Shut off** air conditioning
- Close** attic vents
- Move** furniture from walls
- Wear** heavy shoes, cotton clothing
- Unplug** appliances

#### Floods

- Elevate** important items
- Unplug** appliances

#### All Disasters

- Photograph** each room
- Move** outdoor items away from house
- Shut off** utilities if instructed



### Find and Share Info

#### Receive Alerts

- Visit** [www.sacoes.org](http://www.sacoes.org)
- Follow** @SacramentoOES on Twitter
- Follow** SacramentoOES on Facebook
- Change** your outgoing voicemail to callers trying to see if you are ok
- Post** your status on social media
- Register** with Red Cross Safe and Well
- Register** at [www.Sacramento-Alert.org](http://www.Sacramento-Alert.org) for notifications



All information in the Self Registration Opt-In Portal will be kept strictly confidential:  
[www.Sacramento-Alert.org](http://www.Sacramento-Alert.org)



**The County of Sacramento is committed to improving access to information and services to individuals with disabilities.**

Disability Compliance Office  
Department of Personnel Services  
9310 Tech Center Drive  
Sacramento, CA 95826

**Phone:** (916) 874-7642

**CA Relay Service** 711

**Fax:** (916) 874-7132

**Email:** [dco@saccounty.gov](mailto:dco@saccounty.gov)

<https://personnel.saccounty.gov/Pages/DCOCountyProgramAccessInformation.aspx>

## Get Connected.



**Website:** [sacramento-ready.org](http://sacramento-ready.org)

**Radio:** KFBK 1530am, KSTE 650am, CapRadio 90.9fm

**Twitter:** @SacCountyCA and @SacramentoOES

**Facebook:** @SacramentoCounty and @SacramentoOES



**Design Network for Emergency Management**

Design and FireClear Map by Claudine Jaenichen